

Keystone Coach Works

Disaster Response Units

DRU-1

DRU-2

DRU-3

DRU-M



4786 Library Road
Bethel Park, PA 15102

Phone: 412-833-1900

Fax: 412-833-1918

E-mail: Sales@KeystoneCoachWorks.com

Company History



Keystone Coach Works, Inc. has been in business under the same ownership since 1978. As a vehicle converter for schools, institutions, families and commercial services we build disaster relief vehicles, trucks, transport vans, wheel chair vans and mobile offices.

In 1985 in a joint venture with The Salvation Army Western PA Division, we started designing and building Disaster Relief Vehicles. The original unit was named the DRU (Disaster Response Unit) with an additional larger model following years later named the DRU-2, DRU-3 with Dual Service Windows and Separate Refrigerator and Freezer. We now have the DRU-M a Multipurpose quick response canteen and cargo carrying unit. All of our units are designed from the ground up, with every large and small detail analyzed for maximum use and longevity. We are proud to have produced over 180 units that are currently in service.

DRU FEATURES

- Easy Setup
- Easy Reach Components
- Unit Can be used by one Person
- All Equipment is user Friendly
- Comfortable Work Environment
- Multiply Crew can work with out being cramped. Over 40" between counter tops
- Continuous Work Surfaces
- Counters are Set at a Good Working Height
- Serving Window is Set at Comfortable Height for Customer & Server
- Easy Cleaning, Kemlite Walls, Stainless Steel Counter Tops and Altro Transit Flooring
- Meal Prep Area
- Flip Counter on Both Sides (Multiple Setups)
- Cargo Tie downs are designed for Cambro containers for Stop & Go Feeding

CAMBRO
MANUFACTURING COMPANY



DRU Cambro Package

Qty	Cambro Info
2	250LCD Cam-tainer 2 1/2 gal Holding Capacity 45 - 7 oz. Servings 16 1/2"D x 9" W x 18 3/8" H
4	500LCD Cam-tainer 4 3/4 gal. Holding Capacity 86 - 7 oz. Servings 16 1/2"D x 9" W x 24 1/4" H
2	350LCD Cam-tainer 3 3/8 gal. Holding Capacity 61 - 7 oz. Servings 16 1/2"D x 9" W x 18 3/8" H For Soup Service, No spigot
3	100MPCHL Pan-carrier Holds full size food pans with lids or Serve directly from cavity Exterior Dimensions 26 1/4"W x 18"D x 15 1/2"H Interior Dimensions 21 3/4"W x 13 3/4"D x 8" H



Stainless Steel Flip counter with Cambro



New 80 / 20 split rear door

Flexibility of Rear Flip Counters



Multiple cabinets, that are white laminate lined and have flat bottoms for easy cleanup. With our locking T-handle and drawers slam latch your contents will stay in their proper place while in transit.



1 Interior Outlet on Lighted Switch for Coffee Maker



Circuit Panel



LPG System for easy bottle exchange

DRU-1

The corner stone of our product line.

Designed for quick and mobile response. It has a true triangle area between the serving window, cooking area and main supply cabinet. One person can run this canteen. All of the storage area's are designed to use Cambro containers, also you are supplied with two sizes of storage containers to fit your smaller supplies. Flip counters in the rear will give you plenty of work surfaces and when not in use you have added crew seating and additional storage.

Specification

CHASSIS

Ford E-350 Commercial Cut-a-way
138" Wheelbase w/dual rear wheels
5.4L EFI gasoline Engine
Automatic transmission w/overdrive, oil cooler
LT255/85R-16E all season tires
115 amp. Alternator
Heavy-duty battery with second-auxiliary battery
Heavy duty suspension
Power brakes and power steering
Super Engine Cooling
Fuel tank - 38 gallon total capacity
Cab air conditioning
Electronic AM/FM radio w/clock
White exterior paint and grey interior trim
Rear grip strut bumper
Telescoping trailer tow mirrors

BODY

FRP panel box, aluminum roof & front corners
Recessed bulkhead for cab area extension
12 ft. long, 8 ft. wide, 7 ft. high
Aerodynamic rolled body corners
Prepared white exterior
Exterior body rub rail
Solid bulkhead behind cab and work areas
Sliding door in bulkhead
20/80 rear doors w/ slamlock w/ 12" by 18" windows
Aluminum grab handles on rear entry area
H.D. 12 gauge steel floor frame w/1.125" plywood floor
Kemlite .060 lining on walls, ceiling and insulation

AUDIBLE / VISUAL WARNING EQUIPMENT

1 - Lightbar mounted on cab roof
6 - Octa Brite LED lights mounted top rear, back of box
2 - Octa Brite LED lights mounted on front bumper
1 - Siren with PA & 100 watt speaker
1 - Backup warning alarm

LPG SYSTEM

2 - 20 lb. Propane tanks
Tie-down mount for tanks
High pressure propane lines

Single tank regulator
Exterior compartment with louvered door and vented through floor

ELECTRICAL SYSTEM

Onan 7.0 Kw Commercial Generator
Generator remote start/stop switch and hour meter switch
Exterior access door w/louvers
Circuit panel with appropriate breakers
5 - Interior outlets
1 - Interior outlet on switch (for coffee maker)
3 - Exterior outlets (2 - passenger side, 1 - driver side)
50 amp. 12v. power converter
Auxiliary battery, located under body
Isolator to second battery
Exterior shoreline connector with 25 ft. cord
Dash mounted switch panel for warning and scene lights
12v. dome lights and water pump switch
Exterior switches on front of body for Kwik-Raze floodlights
4 - Weldon #1010 Interior dome lights
2 - 4' 2 bulb fluorescent light fixtures in nylon housing

EXTERIOR SCENE FLOOD LIGHTS

4 - Weldon #3020 12v. 13 degree angled scene lights
2 - Halogen 12v. Cargo Lights above rear doors, automatic activation with vehicle back-up lights
2- Kwik-Raze 110v/500w quartz floodlights mounted on body front w/exterior switches

WATER SYSTEM

15 gallon water tank under body mount
Stainless steel bar sink with high top faucet
Single stage 12v pressure regulated water pump
Exterior water fill inlet

BASIC SERVICE EQUIPMENT

Three burner LPG stove top
Three burner Bunn Pour-O-Matic coffee maker w/ pots
Range hood with 110v light and exhaust fan w/ vent

microwave oven
Exterior 10 ft. awning
3 - 12 ft. cargo belts and related belt track
Additional Convention Microwave in place of the range hood (available at an additional charge)
Optional 2 cu. ft. 3 way refrigerator (110v/12v/ LPG)
(available at an additional charge)

INTERIOR OUTFITTING

All cabinets plywood construction w/formica
Counter tops - Stainless Steel
Interior cabinet heights will be as follows:
Road / work side 36" Curb / serving side 28"
Serving window 34" x 34" w/no bottom frame, safety glass, window to rest on aluminum ledge
Three passenger bench seat with seat belts, removable cushion to access storage under seat
Folding counter tops (2) (approx. 5'6" long) to be installed in cargo area & above bench seat

FLOORING

Altro Transit Flooring provides you with a true slip resistant surface. The floor also has bacteriostat which provides for a no odor or mold finish.

LETTERING / DECALS

Lettering will be as shown in layout drawing
Installation of Salvation Army Shield decals
Division or city name to be specified by customer (one line of text included)
Additional text & graphics are available

AIR CONDITIONING & MISCELLANEOUS

Dometic low profile 110v 13,500 BTU roof mounted A/C Unit w/heat trip
Class 3 trailer hitch(wiring& plug installation customer's responsibility)
Uniden scanner radio
5 lb. ABC fire extinguisher

Note Specifications subject to change without notice

DRU-1



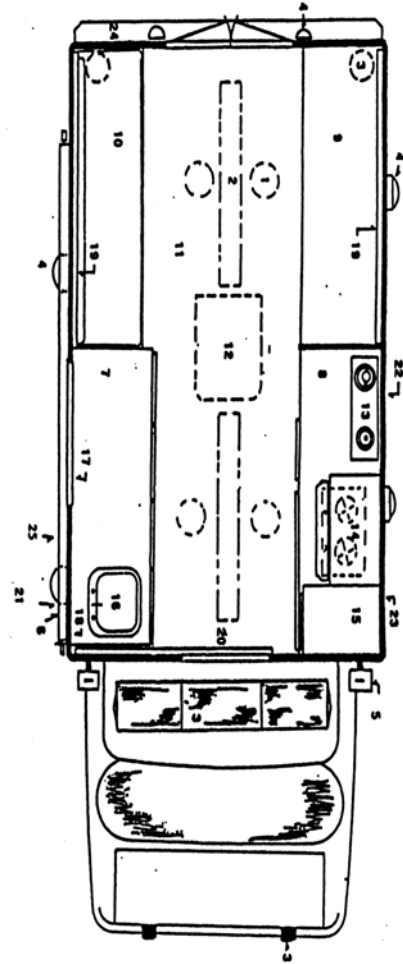
Road Side Cooking Area



Road Side View



Curb Side View



Curb Side Flip Counter



Driver Center Console



Opt. Additional Convention Microwave



Optional Sm. Refrigerator

- 1) 12 Volt Dome Light
- 2) Fluorescent Lights
- 3) Emergency Warning Lights
- 4) 12 Volt Scene Lights
- 5) Kwik-Raze Flood Lights
- 6) RV Style Awning
- 7) Serving Counter & Cabinet
- 8) Work Counter & Cabinets
- 9) Cargo Tie Down Area
- 10) Bench Seat with Storage
- 11) Heavy Altro Flooring
- 12) Roof Mounted A/C
- 13) Three Burner Bunn Coffee Maker
- 14) Three Burner Stove
- 15) Wall Mounted Cabinets
- 16) Sink
- 17) Serving Window with Ledge
- 18) Generator & Electrical Box
- 19) Fold-Down Work Counter Tops
- 20) Pass Thru to Cab Area
- 21) Water Fill & Water Tank
- 22) Exterior LP Gas Compartment
- 23) Exterior Generator Compartment
- 24) Grip Strut Bumper
- 25) Microwave Oven (above sink)

DRU-2

After multiple requests from our customers for expanded cooking, with a full refrigerator, larger generator with more 110 power and hot water there was no way to fit it all in the DRU-1. So in summer of 2000 the DRU-2 was launched with a Ford E-450 cut-a-way 16 ft box. One of the main benefits is that the truck still drives like a cargo van. It has become the main stay of our production line. We now have multiple refrigerator/freezer options, which includes True refrigerator, freezer, dual temp refrigerator/freezer or Dometic 3 way refrigerator/freezer. Ask to see our refrigerator comparison flyer. Other options include a cold weather package to protect your fresh water system. If you have specific options, contact us.

Specification

CHASSIS

Ford E-456 Commercial Cut-a-way
176" Wheelbase w/dual rear wheels
6.8L EFI gasoline V10 Engine
Automatic transmission w/overdrive, oil cooler
LT225/75R-16D all season tires
130 amp. Alternator
Heavy-duty battery with second-auxiliary battery
Heavy duty suspension
Power brakes and power steering
Super Engine Cooling
50 gallon total capacity fuel tanks
Cab air conditioning
Electronic AM/FM radio w/clock
White exterior paint and grey interior trim

BODY

Welded Alumaframe superstructure
Recessed bulkhead for cab area extension
16 ft. long, 7.5 ft. wide, 7 ft. high
Aerodynamic rolled body corners
Prepared white exterior aluminum
Exterior body rub rail
Solid bulkhead behind cab and work areas
Sliding door in bulkhead
Twin 19" rear doors w/ slamlock w/ 12" by 18" windows
Aluminum grab Handles on rear doors
H.D. 12 gauge steel floor frame w/1.125" plywood floor
Extended arm rear view mirrors
Kemlite .060 lining on walls, ceiling & insulation

AUDIBLE / VISUAL WARNING EQUIPMENT

1 - Code 3 XL lightbar mounted on cab roof
2 - Code 3 Model 550 rear beacons mounted on rear roof
2 - Code 3 Oscilazer lights mounted on front bumper
1 - Code 3 V-Con siren with PA & 100 watt speaker

LPG SYSTEM

2 - 20 lb. Propane tanks w/Tiedown

High pressure propane lines and regulator
Exterior compartment w/louvered door and vented through

ELECTRICAL SYSTEM

Kohler 12.0 Kw generator
Generator remote start/stop switch and hour meter switch
Exterior access door w/louvers
Circuit panel with appropriate breakers
5 - Interior outlets
1 - Interior outlet on switch (for coffee maker)
3 - Exterior outlets (2 - passenger side, 1 - driver side)
50 amp. 12v. power converter
Auxiliary battery, located under body and isolator
Exterior shoreline connector with 25 ft. cord
Dash mounted switch panel for warning and scene lights
12v. dome lights and water pump switch
Exterior switches on front of body for Kwik-Raze floodlights
6 - Weldon #1010 interior dome lights
3 - 4' 2 bulb fluorescent light fixtures in nylon housing

EXTERIOR SCENE FLOOD LIGHTS

4 - Weldon #3020 12v. 13 degree angled scene lights
2 - Halogen 12v. cargo lights above rear doors, automatic activation with vehicle back-up lights
2 - Kwik-Raze 110v/500w quartz floodlights mounted on body front w/exterior switches

WATER SYSTEM

36 gallon water tank (mounted under body)
27 gallon waste water tank
10 gallon LPG/110v. hot water tank
Stainless Steel bar sink with high top faucet
3 Bowl stainless steel sink mounted below fold down counter
Single stage 12v pressure regulated water pump
Exterior water fill inlet and city water hook-up

BASIC SERVICE EQUIPMENT

Castle brand four burner LPG stove top
Castle brand 30" commercial grill top / griddle
Three burner Bunn Pour-O-Matic coffee maker w/pots
Range hood with 110v Light and exhaust fan w/vent
2 Microwave convection ovens w/light & exhaust
Exterior 12 ft. awning
3 - 12 ft. cargo belts and related belt track
True T19 refrigerator (110v only)

INTERIOR OUTFITTING

All Cabinets plywood construction w/formica
Counter tops - natural oak trim on front edge
Interior cabinet heights will be as follows:
Road / work side 36" Curb / serving side 28"
Serving window 34" x 34" w/no bottom frame, safety glass, window to rest on aluminum ledge
Two passenger bench seat, located rear curb side w/removable cushion to access storage under seat
Folding counter tops (2) (approx. 5'6" long) to be installed in cargo area & above bench seat

FLOORING

Altro Transit Flooring provides you with a true slip resistant surface. The floor also has bacteriostat which provides for a no odor or mold finish.

LETTERING / DECALS

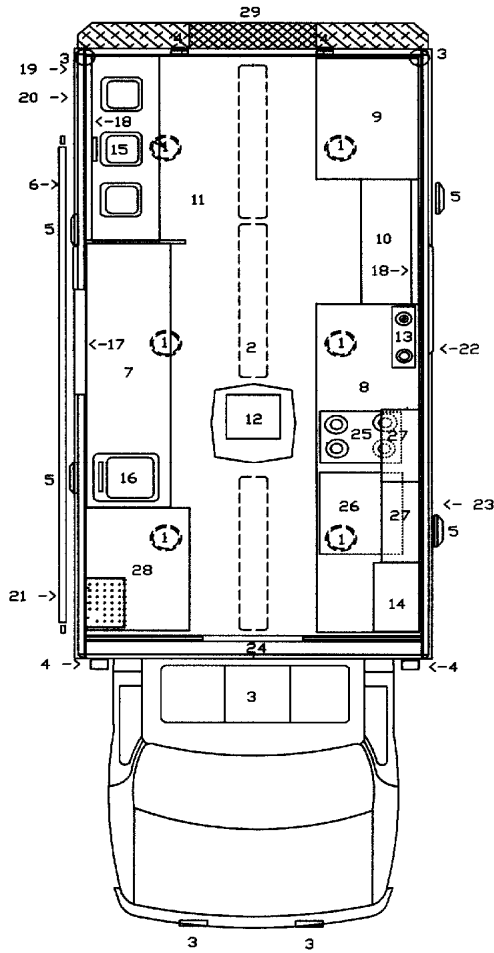
Lettering will be as shown in layout drawing
Installation of Salvation Army Shield decals
Division or city name to be specified by customer (one line of text included)

AIR CONDITIONING & MISCELLANEOUS

Dometic low profile 110v 13,500 BTU roof mounted A/C Unit w/heat strip for work area
Class 3 trailer hitch (wiring & plug installation customer's responsibility)
Uniden scanner radio
5 lb. ABC fire extinguisher

Note Specifications subject to change without notice

DRU-2



Road Side Cooking Area



Road Side View



Curb Side View

- | | |
|--------------------------------|---------------------------------------|
| 1) 12 Volt Dome Lights | 16) Stainless Steel Hand Sink |
| 2) Fluorescent Lights | 17) Serving Window with Ledge |
| 3) Emergency Warning Lights | 18) Fold-Down Counter Tops |
| 4) Kwik-Raze Flood Lights | 19) Waste Tank Under Body |
| 5) 12 Volt Scene Lights | 20) Hot Water Tank |
| 6) RV Style Awning | 21) Water Fills & Under Body Tank |
| 7) Serving Counter & Cabinet | 22) Exterior Lp Gas Compartment |
| 8) Work Counter & Cabinet | 23) Exterior Generator Comp. |
| 9) Cargo Tie Down Area | 24) Pass Thru to Cab Area |
| 10) Bench Seat with Storage | 25) Castle Brand 4 Burner Stove (LPG) |
| 11) Heavy Duty Rubber Flooring | 26) Castle Brand 30" Griddle (LPG) |
| 12) Roof Mounted A/C | 27) Microwave/Convection Ovens |
| 13) Three Burner Coffee Maker | 28) True T-19 Refrigerator 110V |
| 14) Wall Mounted Cabinets | 29) Grip Strut Bumper |
| 15) 3 Bowl Stainless Sink | |

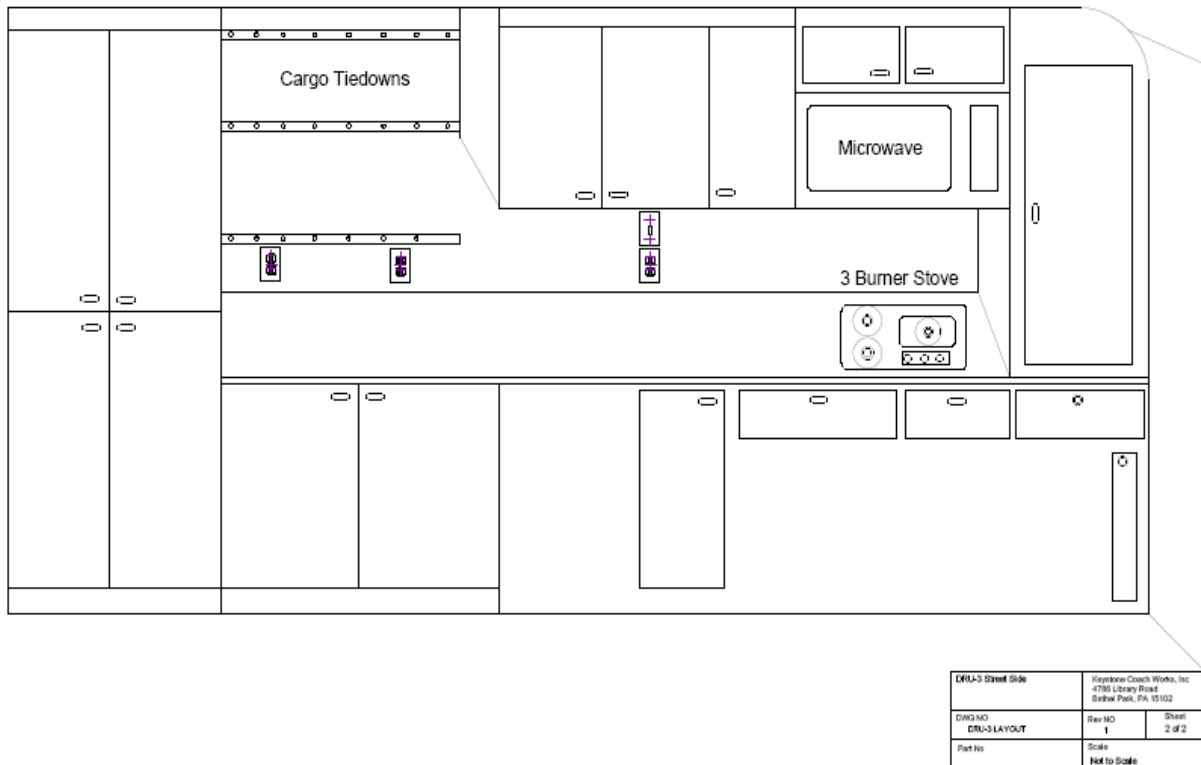
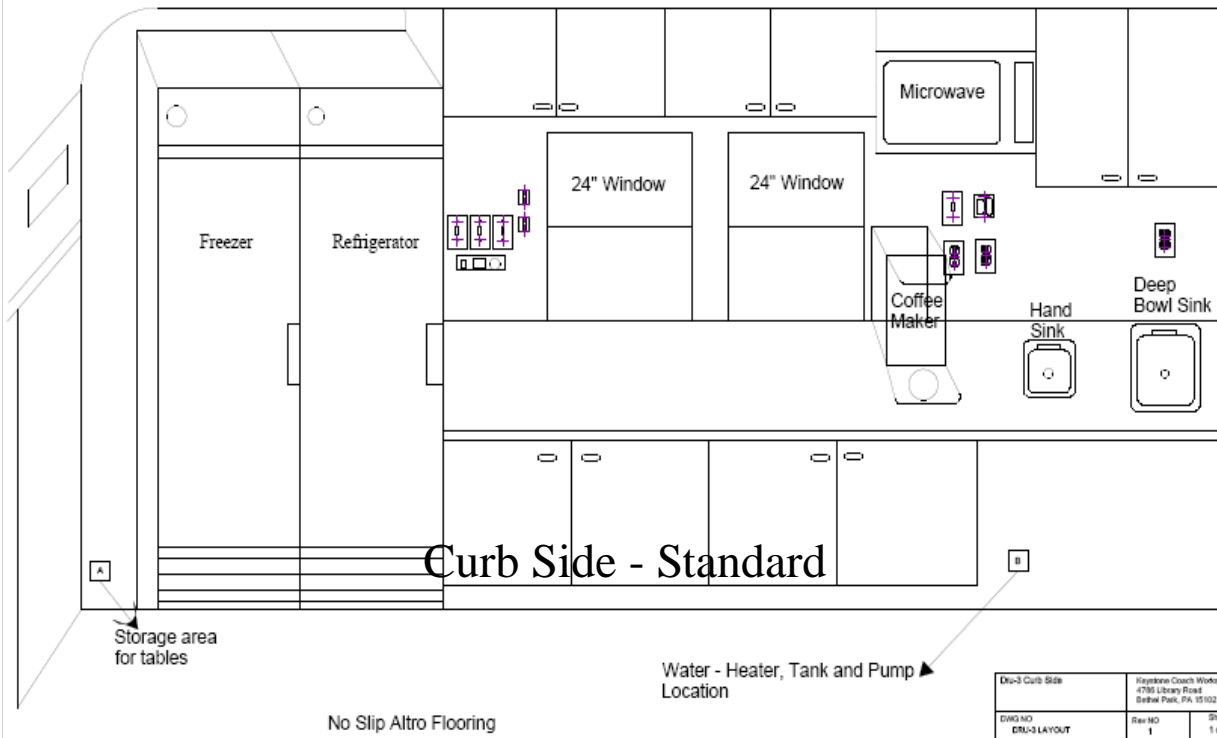


Rear View



Optional True DT-23T Refrigerator/Freezer

DRU-3



DRU-3

After many modifications to the DRU-2 for customers, a request came from Eastern Michigan for a feeding unit that uses already prepared foods and additional storage space. The DRU-3 layout has dual serving windows, dual microwaves, and a separate refrigerator, freezer with a combined 36 cu ft of refrigerator/freezer space. We also expanded upper storage cabinets on both sides of this truck. You can mix the DRU-2 road side layout with DRU-3 curb side layout which gives you expanded cooking with dual serving windows. For complete specifications and options give us a call.



Curb Side



Inside Curb Side



Inside Street Side

DRU-M

Design for Multipurpose Vehicle

Designed for quick mobile response and cargo carrying. All of the storage area's are designed to use Cambro containers, also you are supplied with two sizes of storage containers to fit your smaller supplies. Flip counters in the rear will give you plenty of work surfaces and when not in use you have added crew seating or additional cargo space.

Specification

CHASSIS

Ford E-350 Commercial Cut-a-way
138" Wheelbase w/single rear wheels
5.4L EFI gasoline Engine
Automatic transmission w/overdrive, oil cooler
LT255/85R-16E all season tires
115 amp. Alternator
Heavy-duty battery with second-auxiliary battery
Heavy duty suspension
Power brakes and power steering
Super Engine Cooling
Fuel tank - 37 gallon total capacity
Cab air conditioning
Electronic AM/FM radio w/clock
White exterior paint and grey interior trim
Rear grip strut bumper
Telescoping trailer tow mirrors

BODY

FRP panel box, aluminum roof & front corners
Recessed bulkhead for cab area extension
10 ft. long, 80" wide, 7 ft. high
Aerodynamic rolled body corners
Prepared white exterior
Exterior body rub rail
Solid bulkhead behind cab and work areas
Sliding door in bulkhead
20/80 rear doors w/ slamlock w/ 12" by 18" windows
Aluminum grab handles on rear entry area
H.D. 12 gauge steel floor frame w/1.125" plywood floor
Kemlite .060 lining on walls, ceiling and nsulation

AUDIBLE / VISUAL WARNING EQUIPMENT

1 - Lightbar mounted on cab roof
6 - Octa Brite LED lights mounted top rear, back of box
2 - Octa Brite LED lights mounted on front bumper
1 - Siren with PA & 100 watt speaker
1 - Backup warning alarm

ELECTRICAL SYSTEM

7.0 Generator
Generator remote start/stop switch and hour meter switch

Exterior access door w/louvers
Circuit panel with appropriate breakers
3 - Interior outlets
1 - Interior outlet on switch (for coffee maker)
3 - Exterior outlets (2 - passenger side, 1 - driver side)
50 amp. 12v. power converter
Auxiliary battery, located under body
Isolator to second battery
Exterior shoreline connector with 25 ft. cord
Dash mounted switch panel for warning and scene lights
12v. dome lights and water pump switch
Exterior switches on front of body for Kwik-Raze floodlights
4 - Weldon #1010 Interior dome lights
1 - 4' & 1 -2" 2 bulb fluorescent light fixtures in nylon housing

EXTERIOR SCENE FLOOD LIGHTS

4 - Weldon #3020 12v. 13 degree angled scene lights
2 - Halogen 12v. Cargo Lights above rear doors, automatic activation with vehicle back-up lights

WATER SYSTEM

16 gallon water tank under body mount
Stainless steel bar sink with high top faucet
Single stage 12v pressure regulated water pump
Exterior water fill inlet

BASIC SERVICE EQUIPMENT

Three burner LPG stove top
Three burner Bunn UP-17 series coffee maker w/pots
microwave oven
Exterior 10 ft. awning
3 - 12 ft. cargo belts and related belt track (available at an additional charge)

INTERIOR OUTFITTING

All cabinets plywood construction w/formica
Counter tops - Stainless Steel
Interior cabinet heights will be as follows:
Road / work side 36" Curb / serving side 28"
Serving window 34" x 34" w/no bottom frame, safety glass, window to rest on aluminum ledge

3 passenger removable bench seat with seat belts,
Folding counter tops (2) (approx. 5'2" long) to be installed in cargo area & above bench seat
Full Cargo Net

FLOORING

Altro Transit Flooring provides you with a true slip resistant surface. The floor also has bacteriostat which provides for a no odor or mold finish.

LETTERING / DECALS

Lettering will be as shown in layout drawing
Installation of Salvation Army Shield decals
Division or city name to be specified by customer (one line of text included)
Additional text & graphics are available

AIR CONDITIONING & MISCELLANEOUS

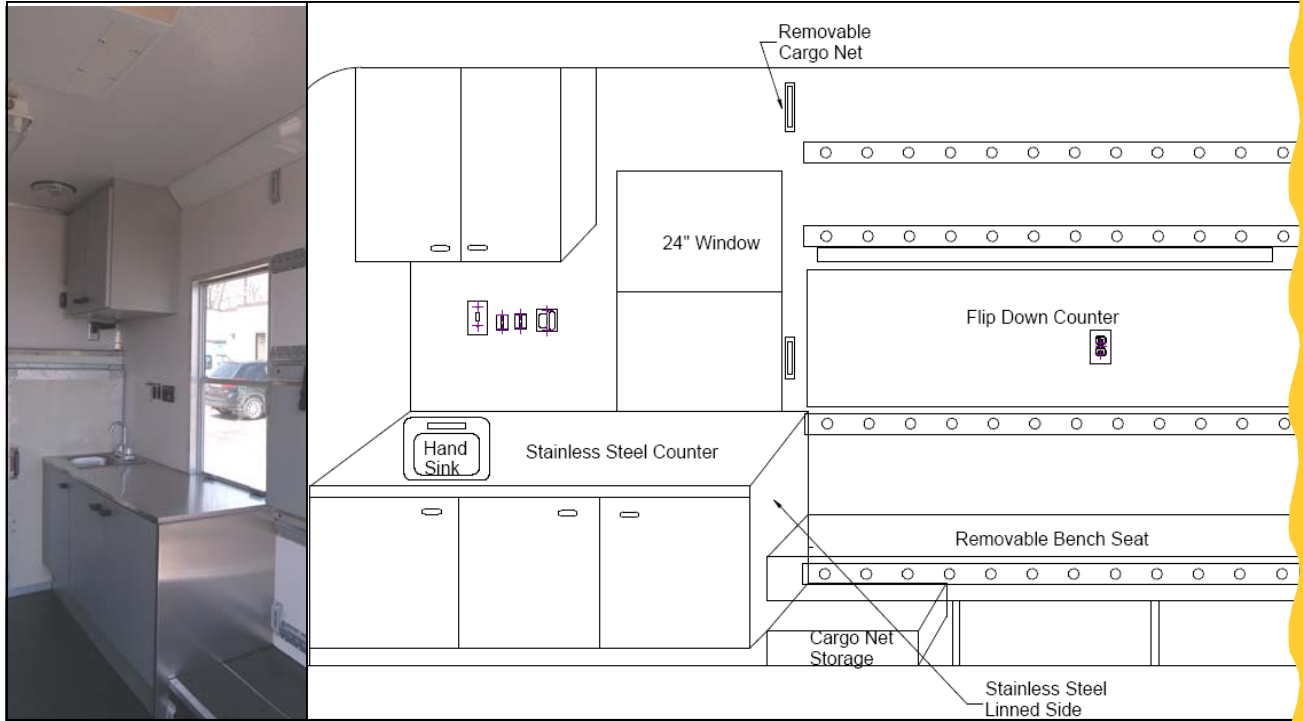
Dometic low profile 110v 13,500 BTU roof mounted A/C Unit w/heat strip
Uniden scanner radio, 5 lb. ABC fire extinguisher
Note Specifications subject to change without notice



Outside Curb Side View



Cargo Net Installed



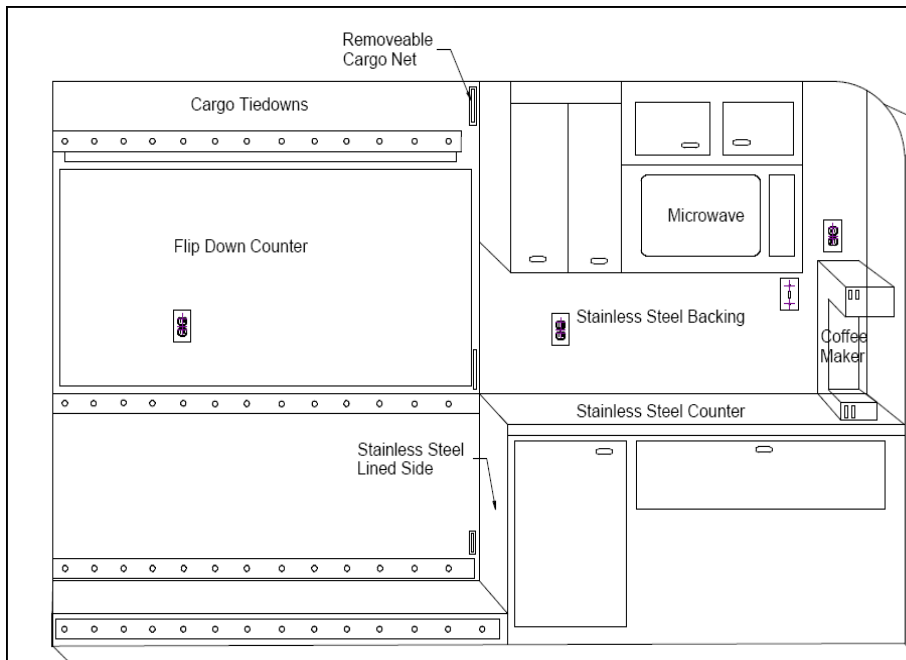
Curb Side



Driver Cab Area



Microwave



Street Side





The original DRU concept has been enhanced by our customers over the years helping us to create one of the most durable and cost effective canteen trucks made today.



Keystone Coach Works, Inc
4786 Library Road
Bethel Park, PA 15102
Phone: 412-833-1900
Fax: 412-833-1918
E-mail: Sales@KeystoneCoachWorks.com